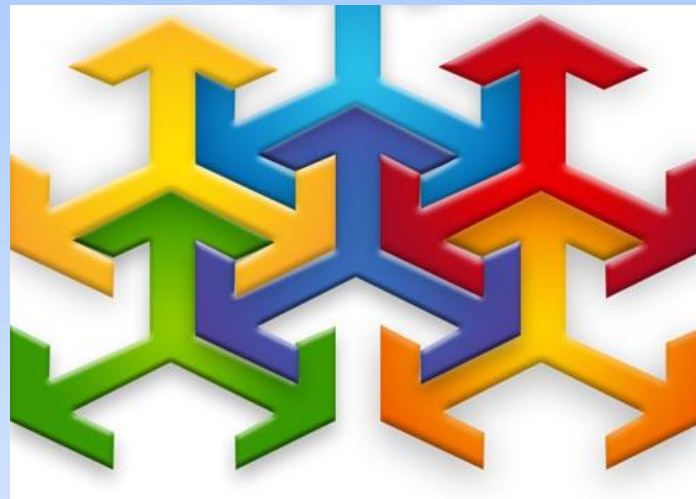


Organizational Structure and Member Engagement in OKPRN

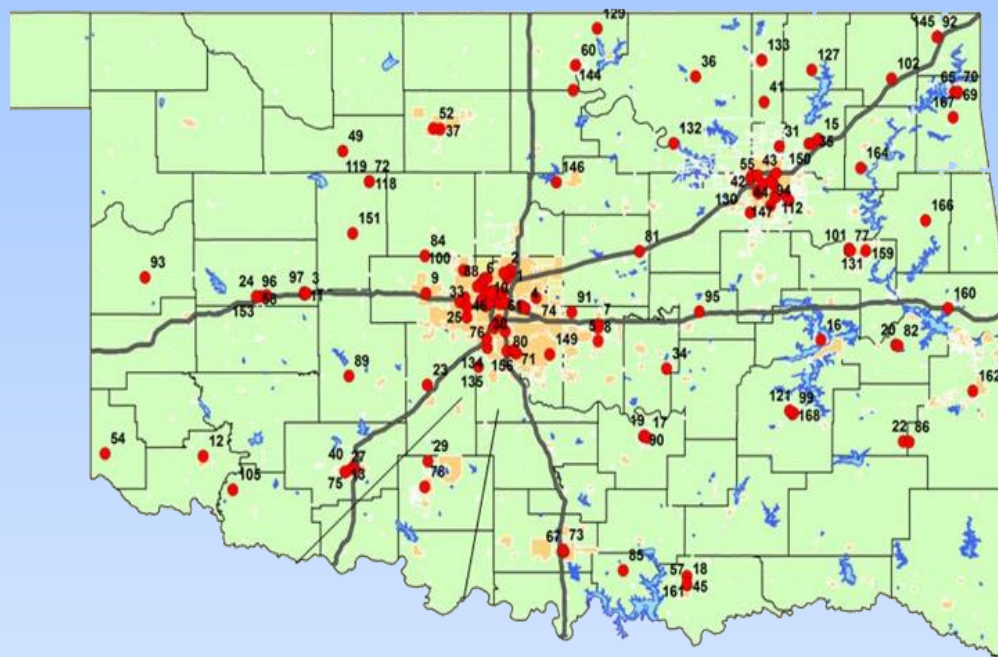


Zsolt Nagykaldi PhD & James Mold MD, MPH

University of Oklahoma HSC Department of Family & Preventive Medicine
and the Oklahoma Physicians Resource/Research Network (OKPRN)

The Network (2014 March)

- Funded in 1994 from a seed grant from a local health foundation
- 264 primary care clinicians throughout Oklahoma
- 136 practices (small private to large academic, FQHCs, IHS/Tribal)
- 60 DOs, 20 PAs, 21 NPs (family, internal med & pediatrics)
- 70+ research and QI projects completed, 85 papers published and 100+ presentations given
- \$15 in external funding leveraged from 20 sources
- 501c(3) status since 2004 with a BOD (clinicians & comm. stakeholders)
- Over 4500 hours of member volunteer time contributed
- Gender distribution: 38% female
- Mean member age: 40-49 years
- Mean years in practice: 10.5 years
- Mean years in OKPRN: about 6.5
- Average member per practice: 2.2



OKPRN Mission & Membership

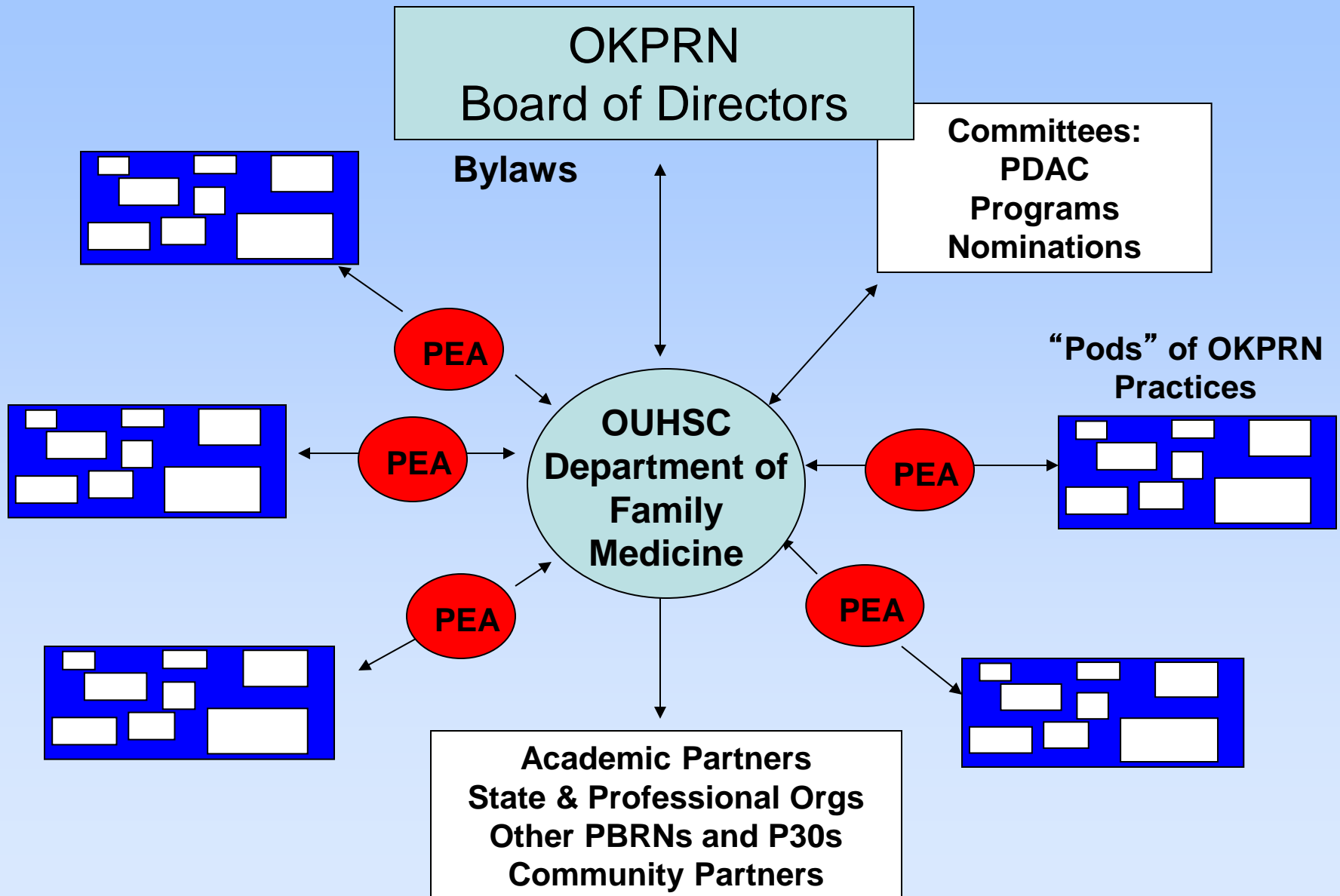
Mission statement:

*The mission of OKPRN is to support primary care clinicians through a **professional network for peer learning**, sharing of resources for best practices and practice-based research.*

Membership eligibility:

*All **primary health care professionals** in good standing with their Oklahoma licensing board are eligible for OKPRN membership. Active members enter into an agreement outlining the benefits and responsibilities of membership. Affiliate membership is also permitted with no obligations, but less access to resources.*

University - 501(c)3 Partnership



Board of Directors

BOD Members (8/17):

Russell Kohl, MD (President)

Kristy Baker, ARNP, ANP-BC

Mike Crutcher, MD, MPH

Jennifer Damron, MPH

Margaret Enright, MPH/CDE

Helen Franklin, MD

Robert Gray, MD

Stanley Grogg, DO

Neil Hann, MPH

Ray Long, MD

James Mold, MD, MPH

Sueben Naidu, MD

Jonny Stephens, PharmD

Scott Stewart, MD

Frances Wen, PhD

Zsolt Nagykaldi, PhD

Margaret Walsh, MS

Background / Role:

Rural private, then academic, then Transformed

Rural solo NP

FQHC group's CMO

State primary care association's liaison

State QIO's liaison

Rural medical group's clinician

Medical Director, OK HealthCare Initiatives

Assoc. Dean of Research at OSU (DO School)

Oklahoma State Department of Health liaison

Rural small practice clinician

Academic geriatrician, OKPRN Founder

Suburban health system practice clinician

Assistant Dean of Sponsored Progs, OSU

Rural medium-size group clinician

Academic health services researcher

Academic health services researcher

OKPRN Network Coordinator

Engaging, Recognizing, Retaining Clinicians

Engaging:

- New practices are engaged by leaders, peers, NC or PEAs
- New clinicians join through the website (also via NC or PEAs)
- Clinicians join for resources, new projects, or due to “peer pressure” (e.g. peer’s quality of care improves)

Recognizing:

- Plaques, certificates, listserv acknowledgements, conferences
- Importance of patient recognition (e.g., small communities)

Retaining:

- Continuous personal relationship building (clinicians & staff)
- Ongoing NC and PEA visits and following through projects
- Frequent, multi-modal communication (remote & in-person)

Network Website: www.okprn.org

Oklahoma Physicians Resource/Research Network

[HOME](#)[RESOURCES](#)[RESEARCH](#)[MORE](#)

FOLLOW US:



About OKPRN

OKPRN is one of the premier primary care PBRNs in the United States. It was established in 1994, as a collaborative project of the Oklahoma Academy of Family Physicians and the University of Oklahoma HSC Department of Family and Preventive Medicine in Oklahoma City. Initial funding was provided by a grant from the U.S. Department of Health and Human Services Health Resources and Services Administration.

The mission of OKPRN is to support primary care clinicians through a professional network for peer learning, sharing of resources for best practices and practice-based research.

[MORE](#)

Recent Accomplishments

Working with two other PBRNs in Oklahoma, OKPRN hired its first dedicated Network Coordinator! Please welcome Meg Walsh to our community! She will be an excellent asset to OKPRN, bringing her skills of organizational management to our primary care practices!

OKPRN received the Champion of Community Health Award from BCBSOK in October, 2013. We are very grateful for this distinction and think that it represents the dedication and hard work of our clinician members over almost two decades to enhance primary care in the State and improve the health of all Oklahomans.

[MORE](#)

Contact Us

Questions or Comments?

(405) 271-3451Margaret (Meg) Walsh
Network Coordinator

Network Website: www.okprn.org

Oklahoma Physicians
Resource/Research Network



HOME

RESOURCES

RESEARCH

MORE

FOLLOW US:



Search site

OKPRN News & Highlights

Since 1994, OKPRN has been on the cutting-edge of developing and disseminating innovative resources and practice-based knowledge that are relevant to primary healthcare, earning state and national recognition. Some of our accomplishments and recent initiatives are showcased below.



Primary Care Extension Program

The Oklahoma Physicians Resource / Research



My Wellness Portal - HRA

Funded by the Agency for Health Care Research and



OKPRN Newsletter

The OKPRN Newsletter is a quarterly publication of

Network Website: www.okprn.org

Submit a Project Idea to OKPRN

Use the form below to submit your ideas for conducting relevant, feasible, and value-added projects that our members might find important to do. Projects can include traditional research, resource development, implementation, and dissemination initiatives. The structured information you provide will help us understand what you have in mind, decide if your idea should be turned into an OKPRN project and determine the level of priority within our project portfolio. You should hear back from us within 3-4 weeks.

Project Idea

Please complete each field before sending your idea to us!

Name *

First

Last

Organization's Name

Email *

Phone Number

 - -

###

###

####

Research Question or Project Objective *

- 1) **Submit concept paper**
- 2) **PDAC reviews request (relevance, impact, feasibility)**
- 3) **Periodic prioritization of proposed projects (members)**
- 4) **BOD approval of projects**
- 5) **Submission of project for funding**

OKPRN Member Listserv

Facilitating a Learning Community

- Active since October, 1999
- 205 subscribers (77% of members)
- 80 messages in 15 threads in April, 2014
- Wide range of topics, mostly primary care
- Lots of member-initiated questions
- Main venue for quick polling and informing

Recent Example:

- 1) Clinician observations on increased incidence of zoster in younger adults
- 2) Rapid poll of members on cases seen
- 3) Summary sent to state epidemiologist
- 4) Epidemiologist contacted the CDC and obtained more information (CDC became interested in getting more front-line data)
- 5) National feedback provided to 200+ listserv members in 10 days



OKPRN-L List

OKPRN-L@SPEEDY.OUHSC.EDU

Practice-Based Research Network

Options:

[Log Out](#) | [Change Password](#)
[Join or Leave OKPRN-L](#)
[Post New Message](#)
[Search Archives](#)

OKPRN-L Archives

- [May '14](#)
- [April '14](#)
- [March '14](#)
- [February '14](#)
- [January '14](#)
- [December '13](#)
- [November '13](#)
- [October '13](#)
- [September '13](#)
- [August '13](#)
- [July '13](#)
- [June '13](#)
- [May '13](#)
- [April '13](#)
- [March '13](#)

Annual OKPRN Convocations

The All-New 20th Anniversary OKPRN Convocation

August 15 - 17, Post Oak Lodge, Tulsa

As members requested, in addition to our joint convocation with OAFP, we brought our PBRN convocation back this year that is not associated with the annual OAFP Meeting. All those who enjoyed the collegial and open atmosphere of past OKPRN convocations, this meeting is back! Representatives of the Oklahoma-based pediatric network and the developing pharmacy PBRN will also be joining this completely renewed and exciting program. Families are welcome to attend non-scientific programs, as in past years. Enjoy a relaxing weekend in the secluded **Post Oak Lodge** in Tulsa! We hope that many members will be able to attend. Download the [convocation flyer](#) or [notice board poster](#).



How to Register?

OKPRN Newsletter

OKPRN News



Oklahoma Physicians Resource/Research Network (www.okprn.org) Spring 2014

Board of Directors

Russell Kohl, MD, President
803 N. Foreman, Vinita, OK 74301
russellkohlmd@ebcglobal.net
Kristy Baker, ARNP
3140 W. Hayes, Clinton, OK 73601
westview_kristy@ebcglobal.net
Jennifer Damron, MPH
4300 N. Lincoln Blvd, OKC, OK 73105
jdamron@okpca.org
Margaret Enright, RN
1400 Quail Springs Parkway, # 400
OKC, OK 73134
mennight@okgio.sdos.org
Neil Hann, MPH
1000 NE 10th Street, OKC, 73117
neil@health.ok.gov
Suben Naidu, MD
1919 E memorial Rd, OKC, OK 73131
sachidanandan.naidu@mercy.net
James Mold, MD, MPH
900 NE 10th Street, OKC 73104
James-mold@ouhsc.edu
Stanley Cooper, DO

From The President's Desk

After a seemingly long winter, Spring is in the air and Meg is on the road! As one of her first actions with OKPRN, Meg has been traveling the state to meet our members and reach out to see what we can do as an organization to meet your needs. If you haven't had the opportunity to meet her yet, keep your eyes open for an OKPRN visitor or make plans to meet and greet at either our [20th Anniversary OKPRN Convocation](#) (page 5) or at the OAFP Scientific Assembly.



With the 501(c)3 application submitted, we are awaiting word from the IRS on what will hopefully be the end of our journey to recognition as a tax-exempt, charitable organization. It's been a long and sometimes confusing journey, but Joy Mercer has persevered in accumulating the variety of documents required by the IRS. Think of it as a journey with a purpose.

NEWSROOM

To our great surprise, AHRQ announced in February that our recent R18 grant submission has received a perfect (10) score from the review panel. We expect a funding decision soon. This is a very rare event in any research portfolio. The project aims at setting up a community-level preventive services delivery system in 3 Oklahoma counties including primary care practices, the county hospital, the county health department and County Health Improvement Organizations (CHIOs). We will also work with all Oklahoma-based HIEs to feed our Preventive Services Reminder System that will be operated by Wellness Coordinators. They will contact patients based on a protocol established by the PCPs and make sure that individuals are linked to recommended, evidence-based preventive services. Upon receiving funding, the project will run for 4 years and will be supported from a \$1.6M budget.

OKPRN Project Updates – Mold / Nagykaldi / Aspy / Welborn / McCarthy

Name of the Project Clin-IQ: Resident Scholarly Activity

Wisdom From The Listserv

Influenza Soapbox – Robert Gray, MD

Question:

True or False: Clinician judgment may be as good as rapid antigen testing

True or False: Testing will be incredibly helpful to make treatment decisions

True or False: If it's likely the patient does have Influenza A and they've been ill for > 48 hours, antivirals are still worth a shot.

Answer 1:

True : Clinician judgment may be as good as rapid antigen testing

False: Testing will be incredibly helpful to make treatment decisions

False: If it's likely the patient does have Influenza A and they've been ill for > 48 hours, antivirals are still worth a shot

In The Spotlight – Healing Hands Community Clinic, OKC

Healing Hands is a service site of Community Health Centers, Inc. We are located at 411 NW 11th, OKC, 73103. Our Center provides services to people who are homeless. We see patients who are in one of the following categories:

- Reside in a shelter
- Reside on the streets or in abandoned buildings
- Reside in a transitional housing program
- Reside with others temporarily (1-2 months – not paying rent)



Meg's Memo – Meg Walsh, OKPRN Network Coordinator

In order to get to know our practices better and to understand the expectations, challenges and goals of our members, I have begun state-wide visits of the OKPRN member practices. With 9 travel days under my belt, I've had the opportunity to meet with 29 clinicians at 27 different practices – from Clinton through Durant to Tahlequah, with many more on the horizon. These quick, 15-minute meetings cover topics such as board membership, potential new members, and two of the studies OKPRN is currently working: Poison Ivy and Spider Bite. They also give clinicians the opportunity to provide feedback on possible future studies, challenges to membership, and ways to improve the network. Those of you on the listserv have already seen the success of these meetings. When Dr. Mold emailed asking about interest in nocturnal leg cramp studies, he was following up on a great idea submitted by Dr. James Gerber in Okarche.



Academic Accomplishments – Nagykaldi

2012-14 Publications From Research Linked to OKPRN

- Nagykaldi ZJ, Yeaman B, Jones M, Mold JW, Scheid DC, HIE-i: Health Information Exchange With Intelligence. J Amul Care Manage. 2014 Jan-Mar;37(1):20-31
- Scheid DC, Hamm RM, Ramakrishnan K, McCarthy LH, Mold JW: Oklahoma Physicians Resource/Research Network: Improving colorectal cancer screening in family medicine: an Oklahoma Physicians Resource/Research Network (OKPRN) study. J Am Board Fam Med. 2013 Sep-Oct;26(5):498-507



Other OKPRN Resources

- ✓ Health IT resources and support
- ✓ QI support, tailoring interventions (PEAs)
- ✓ Best practices toolkits, practice facilitator training
- ✓ Financial support for project participation
- ✓ CMEs, clinician mini-fellowships
- ✓ Sponsored travel to national meetings
- ✓ Infectious disease reports from OSDH
- ✓ Access to specialists, academic expertise
- ✓ Clin-IQ program (FPEN-like EBM research curriculum for residents that benefits the PBRN)

Plans For Patient Engagement

- A new program to develop a parallel group of engaged and informed patients from OKPRN practices
- Both practices and their patients can be represented in P₂COR projects working together
- A learning community can be created by patients led by a patient/community engagement specialist (OU DFPM faculty)
- Patients can be actively involved in all steps of research (from idea generation to dissemination)

Questions? More Info?

www.okprn.org



URL

Zsolt Nagykaladi, PhD
University of Oklahoma HSC
Department of Family &
Preventive Medicine
znagykal@ouhsc.edu



vCard Link

***Organization, strengths and weakness
of your PBRNs***

15 minutes

Questions, Answers, Discussion

25 minutes